

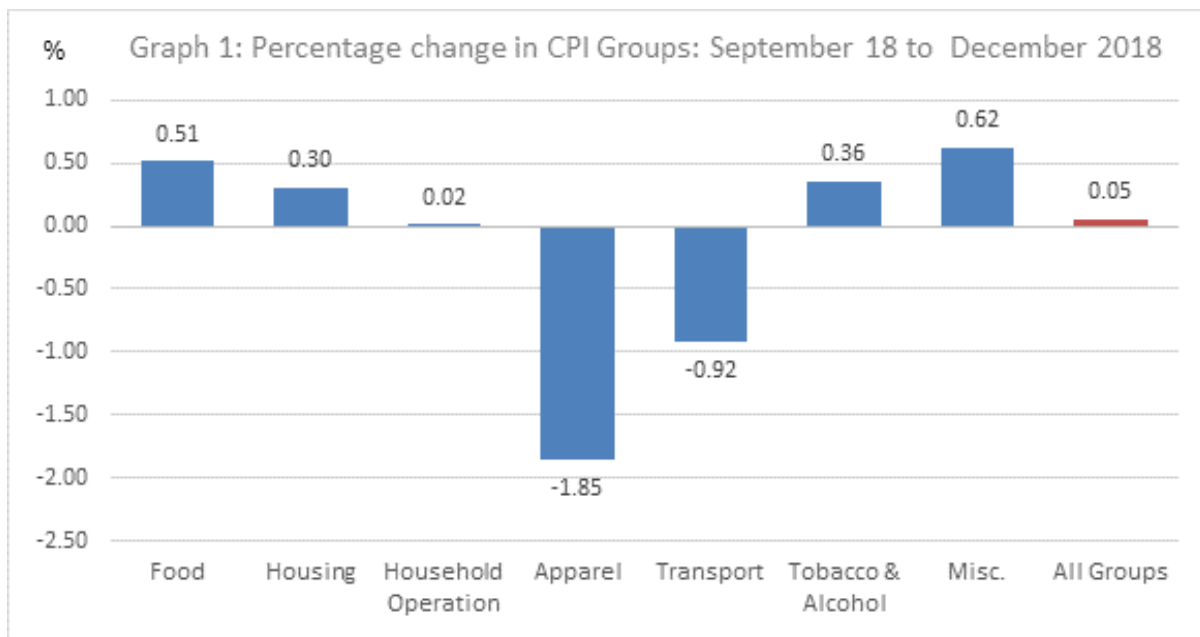
MINISTRY OF FINANCE AND ECONOMIC MANAGEMENT
GOVERNMENT OF THE COOK ISLANDS
COOK ISLANDS
STATISTICAL BULLETIN

CONSUMER PRICE INDEX
December Quarter 2018

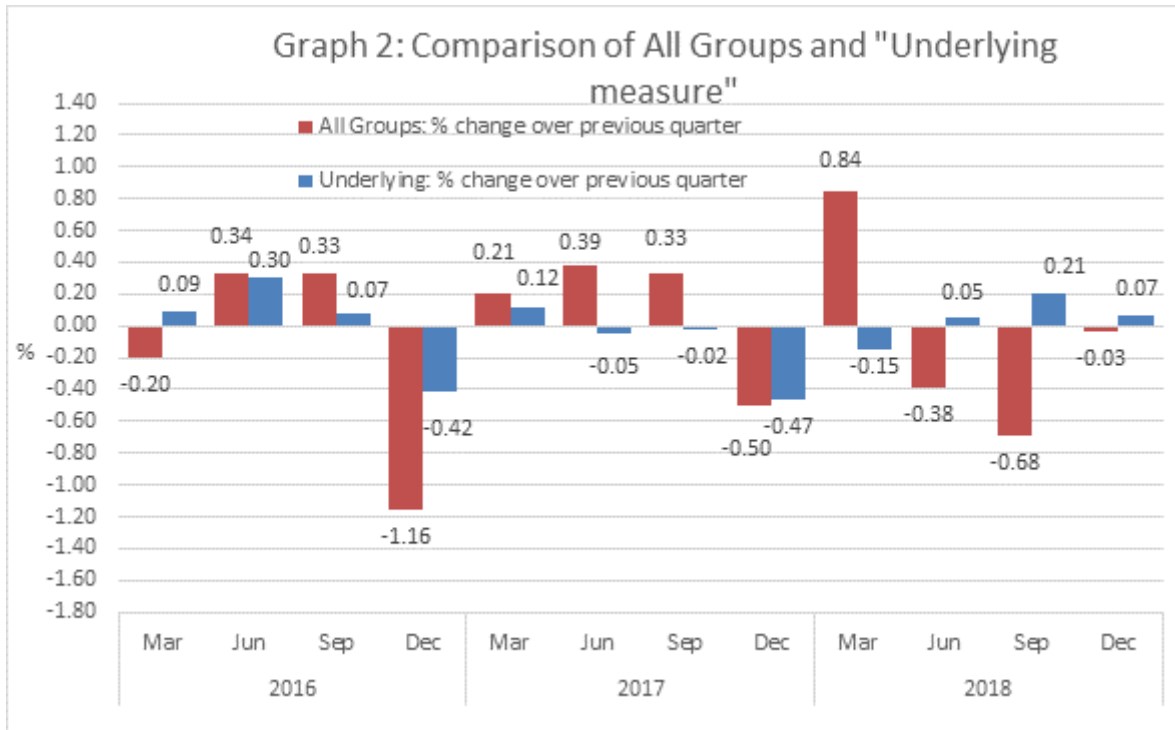
The Consumer Price Index (CPI) for December quarter 2018 increased by 0.05 per cent when compared to September quarter 2018 and decreased by 0.18 per cent during this same time in 2017.

The main downward contribution came from the **Apparel group** of 1.85 per cent driven predominantly by decrease in clothing of 3.05 per cent. **Transport group** also fell by 0.92 per cent driven by decrease in International travels of 3.92 per cent and Motor Vehicle Expenses of 2.61 per cent.

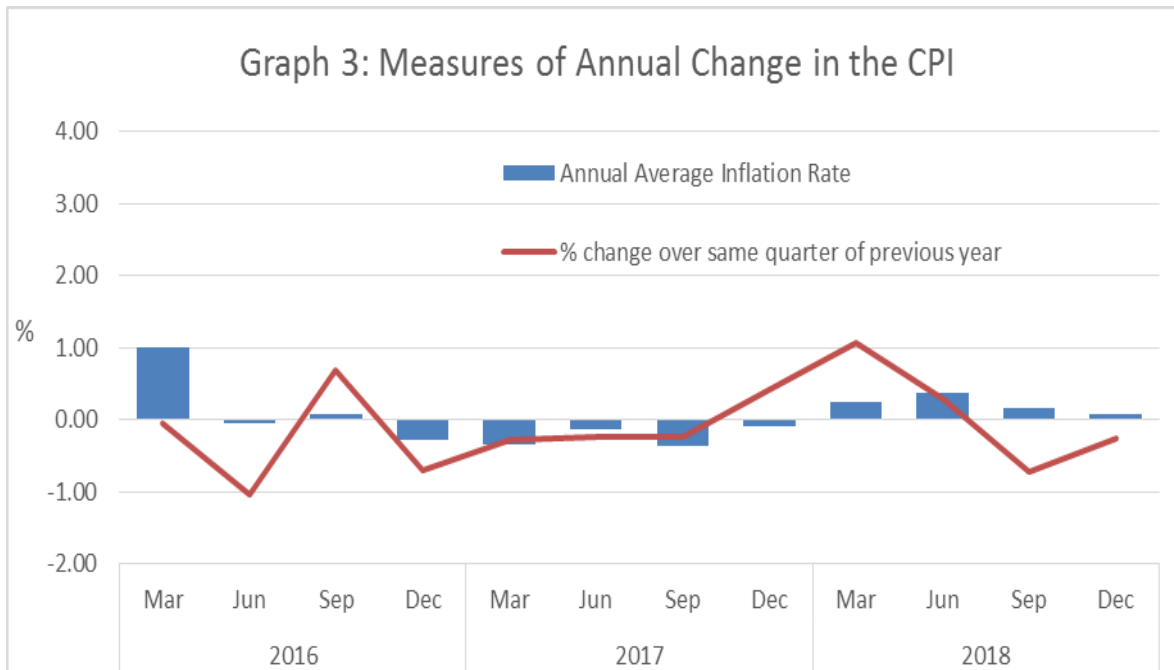
These decreases were offset by increases in the **miscellaneous group** of 0.62 per cent, **Food group** up by 0.51 per cent followed by **Tobacco & Alcohol group** of 0.36 per cent, followed by **Housing Group** up by 0.30 per cent and lastly, **Household Operation group** with 0.02 per cent.



Removing all volatile items, the Underlying CPI showed an increase of 0.07 per cent over the September quarter 2018 and a decrease of 0.17 per cent over the December quarter 2017. The underlying index reached a record high of 15.25 per cent in September 2015 and a record low of 12.20 per cent in June 2015 (Table 5).



The annual average inflation rate showed a positive movement for this period with a 0.11 per cent compared to a negative 0.09 per cent over the same quarter of previous year.



Further information about this release can be obtained from the Statistics Office.

Taggy Tangimetua
 Government Statistician
December 2018

Explanatory Notes

Introduction

The Consumer Price Index (CPI) is an indicator or measure of price changes. It is a fixed weighted average of price relatives and is computed using the Laspeyres price index formula. The current weighting pattern is based on the 2004 Household Expenditure Survey (HES), which was carried out in May-June 2005. The HES information was used to select the 'basket', which is the commonly used term for the goods and services priced for the purpose of compiling CPI.

Underlying Measure

This measure of "underlying" inflation is common internationally, and is generally derived by excluding those items whose prices are considered to be highly volatile, subject to significant seasonal fluctuations, or are largely affected by policy decisions. The Cook Islands measure of "underlying inflation" excludes all locally produced fruit, vegetable, meat and fish; international airfares; mortgage interest; government rents; postal and telecommunications charges; electricity charges; tobacco and alcohol; petrol and diesel.

Other issues

This publication also presents the detailed contribution of each group and sub-group to the overall CPI. These details are shown in Table 6, and take into account the level of each index, its rate of change, and the weight given to that index in the overall calculation. As such they provide a better guide to the importance of each component than is given by the simple percentage changes.

Base period for the CPI

The base period chosen for the index is the quarter ending 31st December 2006.

Timing of the CPI

Prices are collected during the week, in which the mid-point of each quarter falls.

Scope of the CPI

The index applies to the island of Rarotonga only. The main stores situated around Avarua are selected as most consumer expenditures occur in or about that area. A few outlets in each village around the island are also selected.

Computation of the CPI

The formula used in computing the CPI is the weighted arithmetic mean of price relatives, a variant of the Laspeyres formula with fixed base year period weights. In computing the CPI, the formula is:

$$CPI = \frac{\sum[(P_n / P_o)]W}{\sum W} * 100$$

Where P_n = current price
 P_o = base period price
 W = $P_o Q_o$ = weights

Coverage of the CPI

The All Groups index covers 205 items, which are priced every quarter. The table shows the weighting pattern and the relative importance of the items in the basket of goods and services. These items are categorised under the following major groups:

	Major Groups	No of Items	Weights	
			1998	2006
1.	Food	83	31.8	29.4
2.	Housing	17	7.0	13.2
3.	Household Operation	37	15.2	17.4
4.	Apparel	11	3.1	4.7
5.	Transport	15	19.6	18.5
6.	Tobacco & Alcohol	7	15.9	8.1
7.	Miscellaneous	35	7.4	8.7
	TOTAL	205	100.0	100.0

Cook Islands Statistics Office
Ministry of Finance and Economic Management
P O Box 120, Rarotonga
COOK ISLANDS

Phone: (682) 29-511
Fax: (682) 21-511
Email: statsinfo@cookislands.gov.ck
Website: www.mfem.gov.ck/statistics

Table 1 Consumer Price Index Major Groups

Period	All Groups	Food	Housing	Household Operation	Apparel	Transport	Tobacco & Alcohol	Miscellaneous
YEAR	Base: December 2006 = 100							
2013	125.87	131.03	123.37	118.79	96.82	126.51	153.67	115.00
2014	128.53	135.34	120.88	118.66	99.50	125.40	174.10	117.08
2015	130.99	135.14	123.77	117.87	102.87	129.96	187.53	119.20
2016	130.63	136.86	123.61	116.82	105.76	124.42	190.85	118.77
2017	130.51	137.27	120.60	116.12	105.00	125.03	193.79	118.44
QUARTER								
2013 Mar	124.85	129.78	124.11	118.66	96.80	125.87	146.55	114.55
Jun	125.38	130.00	123.83	118.96	96.67	127.11	149.35	114.57
Sep	126.76	131.48	123.30	118.86	96.89	128.24	158.56	115.32
Dec	126.51	132.85	122.24	118.68	96.95	124.81	160.21	115.57
2014 Mar	125.99	132.68	122.10	118.10	96.76	122.49	160.44	116.45
Jun	128.12	135.15	120.37	118.98	100.83	127.70	162.71	117.99
Sep	130.23	137.05	120.11	118.78	101.02	127.07	186.41	116.04
Dec	129.79	136.48	120.93	118.80	99.38	124.34	186.83	117.83
2015 Mar	130.53	134.63	121.77	118.88	99.53	128.96	189.02	119.26
Jun	132.27	135.50	124.59	118.84	102.16	136.01	184.58	119.71
Sep	130.43	134.18	124.35	116.94	104.89	128.64	187.40	118.87
Dec	130.72	136.27	124.36	116.81	104.89	126.22	189.12	118.96
2016 Mar	130.46	136.26	124.30	116.92	105.75	124.23	190.13	118.71
Jun	130.90	137.07	124.76	116.79	105.75	124.76	190.66	118.96
Sep	131.34	137.25	124.76	117.30	105.75	126.65	190.14	118.81
Dec	129.81	136.86	120.63	116.25	105.78	122.05	192.49	118.60
2017 Mar	130.08	137.23	121.14	116.48	105.78	122.76	192.05	118.14
Jun	130.59	137.10	121.58	116.43	105.03	124.84	193.41	118.50
Sep	131.02	137.39	119.97	116.53	104.55	127.37	194.46	118.58
Dec	130.36	137.34	119.71	115.04	104.63	125.16	195.26	118.55
2018 Mar	131.46	137.74	114.63	114.61	110.07	134.85	190.93	118.83
Jun	130.96	137.66	114.90	114.84	110.07	132.27	189.87	118.91
Sep	130.06	137.61	114.64	115.61	110.99	126.36	190.58	119.09
Dec	130.13	138.32	114.99	115.63	108.93	125.20	191.26	119.83

Table 2 Consumer Price Index - Percentage Change

Period	All Groups	Food	Housing	Household Operation	Apparel	Transport	Tobacco & Alcohol	Miscellaneous
YEAR	Base: December 2006 = 100							
2013	1.88	2.64	-0.36	1.35	2.43	-1.11	10.46	0.99
2014	2.11	3.29	-2.02	-0.11	2.76	-0.87	13.29	1.80
2015	1.91	-0.14	2.39	-0.67	3.39	3.63	7.72	1.81
2016	-0.28	1.27	-0.12	-0.89	2.81	-4.26	1.77	-0.36
2017	-0.09	0.30	-2.44	-0.60	-0.72	0.49	1.54	-0.27
2018	0.11	0.41	-4.82	-0.82	4.78	3.71	-1.62	0.61
QUARTER	Percentage Change Over Previous Quarter							
2016 Mar	-0.20	-0.01	-0.05	0.10	0.82	-1.58	0.54	-0.20
Jun	0.34	0.59	0.37	-0.11	0.00	0.43	0.28	0.20
Sep	0.33	0.13	0.00	0.44	0.00	1.51	-0.27	-0.12
Dec	-1.16	-0.28	-3.31	-0.89	0.03	-3.63	1.24	-0.18
2017 Mar	0.21	0.27	0.42	0.20	0.00	0.58	-0.23	-0.38
Jun	0.39	-0.09	0.36	-0.05	-0.71	1.70	0.70	0.30
Sep	0.33	0.21	-1.32	0.09	-0.46	2.03	0.54	0.07
Dec	-0.50	-0.03	-0.22	-1.29	0.08	-1.74	0.41	-0.03
2018 Mar	0.84	0.29	-4.24	-0.37	5.20	7.74	-2.22	0.24
Jun	-0.38	-0.06	0.23	0.20	0.00	-1.91	-0.55	0.07
Sep	-0.68	-0.04	-0.22	0.67	0.83	-4.47	0.38	0.15
Dec	0.05	0.51	0.30	0.02	-1.85	-0.92	0.36	0.62
	Percentage Change Over Same Quarter of Previous Year							
2016 Mar	-0.05	1.21	2.09	-1.65	6.25	-3.67	0.59	-0.46
Jun	-1.04	1.16	0.14	-1.73	3.52	-8.27	3.29	-0.63
Sep	0.69	2.29	0.33	0.31	0.82	-1.55	1.46	-0.05
Dec	-0.70	0.43	-3.00	-0.48	0.85	-3.30	1.78	-0.30
2017 Mar	-0.29	0.71	-2.55	-0.38	0.03	-1.18	1.01	-0.48
Jun	-0.24	0.03	-2.55	-0.31	-0.68	0.06	1.44	-0.38
Sep	-0.24	0.10	-3.84	-0.65	-1.14	0.57	2.27	-0.19
Dec	0.42	0.35	-0.77	-1.05	-1.09	2.55	1.44	-0.04
2018 Mar	1.06	0.37	-5.38	-1.61	4.06	9.85	-0.59	0.58
Jun	0.28	0.41	-5.50	-1.36	4.80	5.95	-1.83	0.35
Sep	-0.73	0.16	-4.44	-0.79	6.16	-0.80	-1.99	0.43
Dec	-0.18	0.71	-3.94	0.52	4.11	0.03	-2.05	1.08
	Annual Average Inflation Rate							
2016 Mar	1.01	-0.20	2.99	-1.24	4.22	1.38	3.62	1.09
Jun	-0.06	0.02	2.13	-1.65	4.77	-2.43	1.40	0.56
Sep	0.08	1.12	1.33	-1.19	3.99	-3.11	1.63	-0.05
Dec	-0.28	1.27	-0.12	-0.89	2.81	-4.26	1.77	-0.36
2017 Mar	-0.33	1.14	-1.27	-0.57	1.29	-3.66	1.88	-0.37
Jun	-0.13	0.86	-1.94	-0.21	0.25	-1.50	1.42	-0.30
Sep	-0.37	0.32	-2.98	-0.45	-0.24	-0.96	1.63	-0.34
Dec	-0.09	0.30	-2.44	-0.60	-0.72	0.49	1.54	-0.27
2018 Mar	0.25	0.21	-3.14	-0.91	0.29	3.22	1.14	-0.01
Jun	0.38	0.41	-4.55	-1.06	2.48	3.59	0.02	0.38
Sep	0.16	0.33	-4.24	-1.10	3.86	3.82	-0.86	0.37
Dec	0.11	0.41	-4.82	-0.82	4.78	3.71	-1.62	0.61

Table 3 Consumer Price Index - Food Group

Period	Fruits & Vegetables	Meat, Poultry & Fish	Cereal Products	Soft Drinks & Sweets	Farm Products, Fats & Oils	Other Food	Prepared Food
YEAR	Base: December 2006 = 100						
2013	141.41	133.97	127.98	142.99	138.62	128.46	115.70
2014	149.60	138.65	131.13	143.72	139.76	128.97	122.70
2015	150.88	137.28	131.01	138.38	141.22	130.16	123.79
2016	157.67	139.16	135.15	138.46	139.02	130.69	122.58
2017	158.62	139.47	136.53	144.15	139.71	131.41	119.46
2018	162.75	138.55	136.08	151.08	140.78	131.28	118.44
QUARTER							
2013 Mar	140.69	131.05	127.54	141.73	137.43	129.58	114.66
Jun	137.68	132.45	128.14	143.73	138.18	127.32	115.08
Sep	142.35	135.56	128.21	142.56	138.44	129.18	114.91
Dec	144.90	136.83	128.02	143.94	140.45	127.75	118.14
2014 Mar	145.31	135.06	127.42	142.36	138.88	128.39	121.20
Jun	151.42	138.54	129.93	142.26	140.75	130.00	121.45
Sep	151.95	140.27	133.87	147.76	139.43	127.58	124.58
Dec	149.72	140.72	133.31	142.51	139.98	129.90	123.57
2015 Mar	150.76	136.51	131.62	139.77	138.77	128.55	122.96
Jun	151.10	137.48	130.53	138.62	142.55	132.36	124.01
Sep	148.72	136.18	130.53	135.75	141.29	127.93	124.09
Dec	152.96	138.97	131.35	139.38	142.28	131.82	124.09
2016 Mar	155.91	137.88	133.54	137.74	140.21	131.61	123.26
Jun	159.80	139.01	134.17	138.64	139.35	130.70	123.26
Sep	159.17	139.77	136.43	137.32	137.78	129.12	123.31
Dec	155.80	139.97	136.46	140.12	138.73	131.34	120.50
2017 Mar	156.30	140.72	136.54	141.04	138.30	132.12	120.50
Jun	156.94	139.83	136.39	142.13	138.50	131.70	120.50
Sep	159.19	139.07	136.61	146.82	141.09	130.94	118.75
Dec	162.04	138.23	136.58	146.59	140.94	130.86	118.08
2018 Mar	162.42	140.16	134.74	147.30	140.28	131.48	118.74
Jun	162.24	137.68	135.84	151.16	140.93	130.09	119.81
Sep	162.47	138.07	136.26	152.52	140.97	130.59	117.61
Dec	163.86	138.30	137.48	153.33	140.93	132.97	117.61

Table 4 Consumer Price Index Food Group - Percentage Change

Period	Fruits & Vegetables	Meat, Poultry & Fish	Cereal Products	Soft Drinks & Sweets	Farm Products, Fats & Oils	Other Food	Prepared Food
YEAR	Base: December 2006 = 100						
2013	8.78	1.68	1.21	4.54	3.64	0.35	0.93
2014	5.79	3.49	2.47	0.51	0.82	0.40	6.06
2015	0.86	-0.98	-0.10	-3.72	1.05	0.93	0.88
2016	4.50	1.36	3.16	0.05	-1.56	0.40	-0.97
2017	0.60	0.22	1.02	4.11	0.50	0.55	-2.55
2018							
QUARTER	Percentage change over previous quarter						
2013 Mar	7.59	-0.30	0.32	1.14	0.69	0.39	0.00
Jun	-2.14	1.06	0.46	1.41	0.54	-1.75	0.36
Sep	3.39	2.35	0.05	-0.81	0.19	1.47	-0.15
Dec	1.79	0.94	-0.14	0.97	1.45	-1.11	2.81
2014 Mar	0.28	-1.29	-0.47	-1.10	-1.12	0.50	2.59
Jun	4.20	2.57	1.97	-0.07	1.35	1.25	0.20
Sep	0.35	1.25	3.03	3.86	-0.94	-1.86	2.58
Dec	-1.47	0.32	-0.42	-3.55	0.40	1.81	-0.81
2015 Mar	0.70	-2.99	-1.27	-1.92	-0.87	-1.04	-0.50
Jun	0.22	0.71	-0.83	-0.82	2.73	2.97	0.86
Sep	-1.57	-0.95	0.00	-2.07	-0.89	-3.35	0.06
Dec	2.85	2.05	0.63	2.68	0.70	3.05	0.00
2016 Mar	1.93	-0.79	1.66	-1.18	-1.45	-0.16	-0.67
Jun	2.49	0.82	0.47	0.66	-0.61	-0.70	0.00
Sep	-0.40	0.55	1.68	-0.95	-1.13	-1.21	0.04
Dec	-2.11	0.14	0.03	2.04	0.69	1.72	-2.28
2017 Mar	0.32	0.54	0.05	0.65	-0.31	0.60	0.00
Jun	0.41	-0.63	-0.11	0.78	0.15	-0.31	0.00
Sep	1.43	-0.54	0.16	3.30	1.87	-0.58	-1.45
Dec	1.79	-0.60	-0.02	-0.16	-0.11	-0.06	-0.56
2018 Mar	0.24	1.39	-1.34	0.48	-0.47	0.47	0.56
Jun	-0.11	-1.77	0.81	2.62	0.46	-1.06	0.90
Sep	0.14	0.29	0.31	0.90	0.02	0.38	-1.84
Dec	0.99	0.46	1.21	1.44	0.00	2.21	-1.84

Table 6 Consumer Price Index - Contributions to the overall change

Major Groups & Subgroups	Base Weight	Mar-18		Jun-18		Sep-18		Dec-18		% change	Contribution
		Index	Index	Index	Index	Index	Index	Index	Index		
		No.	Point	No.	Point	No.	Point	No.	Point	Sep-2018	to % change
										Dec-2018	Dec-2018
FOOD	29.39	137.74	40.48	137.66	40.46	137.61	40.45	138.32	40.65	0.51	0.16
Fruits & Vegetables	3.56	162.42	5.78	162.24	5.78	162.47	5.78	163.86	5.83	0.85	0.04
Meat, Poultry & Fish	7.96	140.16	11.15	137.68	10.96	138.07	10.99	138.30	11.01	0.17	0.01
Cereal Products	5.32	134.74	7.17	135.84	7.23	136.26	7.25	137.48	7.32	0.89	0.05
Soft Drink & Sweets	2.12	147.30	3.13	151.16	3.21	152.52	3.24	153.33	3.26	0.53	0.01
Farm Products, Fats & Oils	2.57	140.28	3.61	140.93	3.62	140.97	3.62	140.93	3.62	-0.03	0.00
Other Food	2.46	131.48	3.24	130.09	3.20	130.59	3.21	132.97	3.27	1.83	0.04
Prepared Food	5.39	118.74	6.41	119.81	6.46	117.61	6.34	117.61	6.34	0.00	0.00
HOUSING	13.24	114.63	15.18	114.90	15.22	114.64	15.18	114.99	15.23	0.30	0.04
Rent & Mortgages	8.99	114.81	10.33	115.20	10.36	115.10	10.35	115.64	10.40	0.46	0.04
House Insurance	0.54	106.31	0.58	106.31	0.58	106.31	0.58	106.31	0.58	0.00	0.00
House Maintenance	3.70	115.41	4.28	115.41	4.28	114.75	4.25	114.70	4.25	-0.04	0.00
HOUSEHOLD OPERATION	17.40	114.61	19.94	114.84	19.98	115.61	20.11	115.63	20.12	0.02	0.00
Fuel & Light	6.20	131.92	8.17	131.92	8.17	131.92	8.17	131.92	8.17	0.00	0.00
Household Appliances	2.35	97.61	2.30	97.61	2.30	97.61	2.30	97.61	2.30	0.00	0.00
Furniture	1.20	98.86	1.19	98.86	1.19	109.07	1.31	111.80	1.34	2.50	0.02
Home Furnishing	0.57	104.42	0.60	104.42	0.60	112.58	0.65	112.58	0.65	0.00	0.00
Cleaning Supplies	0.69	133.58	0.92	135.77	0.93	131.97	0.91	129.12	0.89	-2.17	-0.01
Household Supplies	0.84	117.13	0.99	120.16	1.01	119.14	1.01	117.95	1.00	-1.00	-0.01
Household Services	5.54	104.20	5.78	104.20	5.78	104.20	5.78	104.20	5.78	0.00	0.00
APPAREL	4.69	110.07	5.16	110.07	5.16	110.99	5.20	108.93	5.11	-1.85	-0.07
Clothing	2.96	113.46	3.12	113.46	3.12	115.02	3.16	111.51	3.06	-3.05	-0.07
Clothing Materials	0.51	115.86	0.84	115.86	0.84	115.86	0.84	115.86	0.84	0.00	0.00
Footwear	1.22	98.98	1.20	98.98	1.20	98.98	1.20	98.98	1.20	0.00	0.00
TRANSPORTATION	18.56	134.85	25.03	132.27	24.55	126.36	23.46	125.20	23.24	-0.92	-0.16
Internal Travel	1.16	188.97	2.19	188.97	2.19	188.97	2.19	188.97	2.19	0.00	0.00
Overseas Travel	3.94	185.85	7.33	171.32	6.76	139.94	5.52	134.45	5.30	-3.92	-0.17
Motor Vehicles	7.56	116.91	8.84	116.91	8.84	116.91	8.84	116.91	8.84	0.00	0.00
Motor Fuel & Oil	3.52	108.60	3.82	111.21	3.92	114.78	4.04	116.94	4.12	1.88	0.06
Motor Vehicle Expenses	2.38	119.82	2.85	119.96	2.86	120.56	2.87	117.41	2.79	-2.61	-0.06
TOBACCO & ALCOHOL	8.05	190.93	15.36	189.87	15.28	190.58	15.33	191.26	15.39	0.36	0.04
Tobacco	6.24	428.34	7.72	428.92	7.73	429.83	7.75	429.83	7.75	0.00	0.00
Alcohol	6.24	122.38	7.64	120.85	7.54	121.51	7.59	122.38	7.64	0.72	0.04
MISCELLANEOUS	8.67	118.83	10.31	118.91	10.31	119.09	10.33	119.83	10.39	0.62	0.05
Other Goods	5.00	121.29	6.06	121.43	6.07	121.73	6.09	123.02	6.15	1.05	0.05
Other Services	3.67	115.49	4.24	115.49	4.24	115.49	4.24	115.49	4.24	0.00	0.00
ALL GROUPS	100.00	131.46	131.46	130.96	130.96	130.06	130.06	130.13	130.13	0.05	0.05
NON FOOD INDEX	70.61	128.85	90.98	128.17	90.50	126.92	89.62	126.71	89.47	-0.16	-0.11
"Underlying CPI"	62.97	124.45	78.37	124.51	78.41	124.77	78.57	124.85	78.62	0.07	0.04

Table 7 Average Prices of Selected Commodities

Items	Unit	Average Annual					Quarter																							
							2014				2015				2016				2017				2018							
		2013	2014	2015	2016	2017	Mar	Jun	Sep	Dec	Mar	Jun	Sep	Dec	Mar	Jun	Sep	Dec	Mar	Jun	Sep	Dec	Mar	Jun	Sep	Dec				
Banana	dozen	3.57	4.09	3.86	4.20	4.63	4.20	4.11	4.11	3.94	3.60	3.94	3.80	4.11	4.11	3.94	4.11	4.63	4.63	4.63	4.63	4.63	4.63	4.63	4.63	4.63	4.63	4.63		
Orange	dozen	6.26	7.83	8.78	9.00	9.95	6.96	8.12	8.12	8.12	8.12	9.00	9.00	9.00	9.00	9.00	9.00	9.00	9.00	9.00	9.00	9.00	9.40	9.40	12.00	12.00	12.00	13.00		
Kumara	kg	5.87	6.45	6.39	6.84	6.78	6.26	6.51	6.51	6.51	6.51	6.16	6.16	6.72	6.84	6.84	6.84	6.84	6.84	6.84	6.84	6.84	6.84	6.84	6.84	6.59	6.47	6.47	7.71	
Potato	kg	3.03	3.03	3.24	3.59	3.41	2.97	3.08	2.94	3.12	3.14	3.34	3.06	3.42	3.64	3.92	3.62	3.17	3.23	3.44	3.49	3.49	3.54	3.40	3.38	3.32				
Taro	kg	4.79	4.87	4.87	4.87	4.87	4.87	4.87	4.87	4.87	4.87	4.87	4.87	4.87	4.87	4.87	4.87	4.87	4.87	4.87	4.87	4.87	4.87	4.87	4.87	4.87	4.87	4.87		
Onion	kg	3.11	3.11	3.03	3.34	3.21	3.25	3.18	2.98	3.01	2.92	2.98	3.09	3.13	3.41	3.41	3.25	3.29	3.29	3.18	3.19	3.18	3.20	3.18	3.23	3.39				
Beef Sausage	450g	7.47	7.01	7.05	7.15	7.16	7.28	6.66	6.99	7.13	7.13	7.13	7.09	6.85	7.13	7.13	7.13	7.21	7.21	7.21	7.38	6.82	6.77	6.66	6.66	6.66				
Tinned Corned Beef-Palm	340g	6.50	6.61	6.76	6.98	6.93	6.54	6.65	6.58	6.67	6.53	6.67	6.91	6.93	6.95	6.98	6.95	7.02	7.03	6.92	6.92	6.83	6.93	6.88	6.85	6.87				
Tinned Sardines	100g	3.94	3.94	3.30	3.19	3.15	3.88	4.23	4.03	3.64	3.60	3.24	2.94	3.43	3.44	3.27	3.08	2.95	2.96	3.17	3.23	3.23	3.25	3.19	3.20	2.96				
Tinned Mackerel in oil	425g	4.61	4.64	4.76	5.24	5.48	4.59	4.70	4.63	4.63	4.61	4.77	4.85	4.83	4.85	5.26	5.40	5.46	5.46	5.47	5.50	5.50	5.47	5.41	5.41	5.44				
Tinned Tuna in oil	185g	3.86	3.62	3.42	3.67	3.52	3.76	3.73	3.58	3.43	3.43	3.36	3.39	3.52	3.60	3.65	3.76	3.70	3.70	3.48	3.45	3.45	3.53	3.60	3.55	3.62				
Square Loaf Bread	each	4.80	4.86	4.90	4.90	4.88	4.79	4.87	4.90	4.88	4.90	4.90	4.90	4.90	4.90	4.90	4.90	4.89	4.89	4.88	4.88	4.88	4.88	4.86	4.89	4.89				
Cabin Bread	400g	2.69	2.72	2.67	2.72	2.71	2.64	2.74	2.76	2.75	2.64	2.71	2.64	2.72	2.73	2.73	2.72	2.70	2.72	2.71	2.72	2.72	2.72	2.73	2.75	2.83				
Cream Cracker	250g	3.09	2.98	2.92	2.87	2.92	2.99	2.97	2.98	3.00	2.97	2.94	2.87	2.91	2.88	2.91	2.84	2.84	2.93	2.93	2.92	2.92	2.84	3.02	3.07	3.08				
Short Grain Rice	500g	1.93	1.98	2.09	2.56	2.75	1.86	1.90	2.11	2.05	2.18	2.01	2.05	2.12	2.34	2.41	2.75	2.74	2.72	2.74	2.76	2.77	2.73	2.79	2.67	2.81				
Milk Powder	900g	16.28	16.90	17.68	17.42	17.45	16.49	16.83	17.04	17.25	17.50	17.94	17.54	17.74	17.62	17.58	17.03	17.44	17.38	17.41	17.50	17.50	17.37	17.61	17.63	16.95				
Butter	454g	6.37	6.84	7.12	7.00	6.98	6.51	6.82	6.94	7.08	7.06	7.21	7.18	7.05	6.99	7.05	7.02	6.92	6.95	6.99	6.99	6.99	7.13	7.11	7.26	7.27				
Egg	dozen	7.27	7.37	7.29	7.33	7.58	7.54	7.53	7.23	7.17	7.10	7.39	7.30	7.35	7.35	7.30	7.25	7.43	7.52	7.48	7.66	7.66	7.40	7.40	7.19	7.24				
White Sugar	1.5kg	4.74	4.85	4.69	4.80	4.69	4.91	4.94	4.79	4.78	4.71	4.60	4.57	4.87	4.92	4.81	4.72	4.75	4.71	4.68	4.68	4.68	4.74	4.61	4.45	4.42				
Timber	lin. mtr	5.08	5.08	5.46	5.11	5.11	5.35	5.04	4.90	5.04	5.04	5.04	5.87	5.87	5.11	5.11	5.11	5.11	5.11	5.11	5.11	5.39	5.39	5.39	5.39					
Roofing Iron	sheet	17.28	17.25	17.68	17.65	17.65	16.70	16.95	17.65	17.70	17.70	17.70	17.65	17.65	17.65	17.65	17.65	17.65	17.65	17.65	17.65	17.65	17.65	17.65	17.65	17.65				
Electricity, domestic charges	340 units	292.28	297.15	292.10	285.43	285.43	292.28	298.77	298.77	298.77	298.77	298.77	285.43	285.43	285.43	285.43	285.43	285.43	285.43	285.43	285.43	285.43	285.43	285.43	285.43	285.43				
Soap Powder	kg	9.10	9.06	9.15	8.54	8.75	9.19	9.21	8.84	9.01	9.28	9.33	9.15	8.85	8.67	8.55	8.42	8.53	8.78	8.71	8.76	8.76	8.45	8.78	8.43	8.13				
Petrol	litre	2.64	2.60	2.27	2.02	2.05	2.56	2.63	2.64	2.58	2.40	2.26	2.27	2.15	1.97	1.95	2.15	1.99	2.03	2.09	2.04	2.04	2.16	2.19	2.27	2.32				
Diesel	litre	2.46	2.37	2.12	1.80	1.96	2.39	2.37	2.37	2.37	2.25	2.13	2.08	2.02	1.80	1.71	1.87	1.83	1.85	2.00	2.00	2.00	2.08	2.18	2.22	2.26				
Cigarette, Winfield	pkt of 25	18.42	23.66	27.58	29.11	30.56	20.38	20.78	26.70	26.79	27.12	27.00	27.81	28.39	28.75	28.88	28.70	30.13	30.40	30.40	30.59	30.86	29.54	29.58	29.65	29.65				
Tobacco, port royal	2oz pkt	42.61	67.25	88.36	89.08	88.23	44.95	45.24	89.90	88.92	87.39	89.33	87.39	89.33	89.33	89.33	88.36	88.36	88.36	88.02	88.19	88.19	88.19	88.19	88.16	88.16				